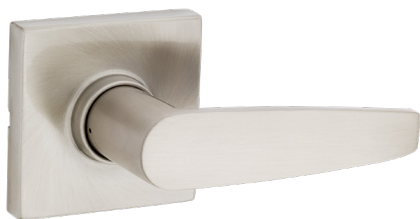


Introducing WINSTON SQUARE ROSE

Safe Lock by Weiser was designed with one thought in mind, providing you with quality, dependability, and security. A favoured mix of styles and finishes ensure that you provide the look and feel that families want. The perfect starter home package designed to leave a lasting impression.



SAFE LOCK
by WEISER



SPECIFICATIONS

| | |
|-----------------------|--|
| Door prep | Cross Bore 2-1/8", Edge Bore 1", Latch Face 1" x 2-1/4" |
| Backset | Adjustable to 2-3/8" or 2-3/4" UL 2-3/4" standard 2-3/8" optional |
| Door Thickness | 1-3/8" - 1-3/4" doors standard. No thick door option |
| Cylinder | KW 5 pin |
| Faceplate | 1" x 2-1/4", square corner |
| Strikes | 2-1/4" full lip, square corner |
| Bolt | 1/2" throw |
| Door Handing | Non-handed |
| ANSI/BHMA | A156.2 Grade 3 |
| ADA | 1000 and 7000 functions satisfy section 4.13.9 ADA requirements |
| UL | Meets UL 3 hour fire rating for all UL functions. ULRef # R7860. Meets 20-minute with drive-in latch |
| Warranty | Lifetime Mechanical and Lifetime Finish |

FINISHES

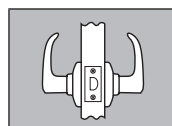


514 | Matte Black

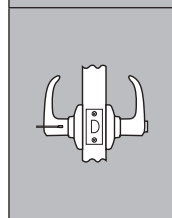


15 | Satin Nickel

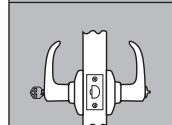
FUNCTIONS



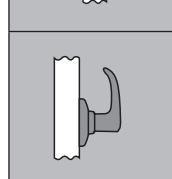
1000 Passage/Hall/Closet: Both levers always free.



3000 Privacy/Bed/Bath: Both levers locked or unlocked by turnbutton inside. Outside lever unlocked by emergency key.



5000 Keyed Entry: Both levers locked or unlocked by key outside or turnbutton inside.



7000 Half Dummy Trim, Surface Mounted: For doors where only a pull is required.

SAFE LOCK
by WEISER

weiserlock.com
1-800-501-9471