

SAFELOCK DEADBOLT - SD9102

Box Pack Specifications



SATIN NICKEL



SATIN CHROME



SD9102

15
Satin Nickel

26D
Satin Chrome

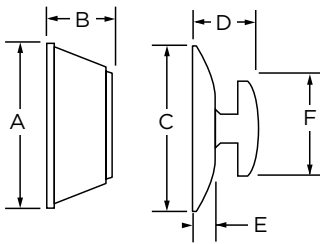
KW Single Cylinder 3 Hour



SPECIFICATIONS



Door Prep	Single Cylinder: Cross Bore 2-1/8". Edge Bore 1" Latch Face 1" x 2-1/4"
Backset	Adjustable to 2-3/8" or 2-3/4"
Door Thickness	1-3/8"-1-3/4" doors standard. No thick door option
Cylinder	KW 5 pin
Faceplates	1" x 2-1/4" Includes square corner
Strikes	2-1/4" full lip. Includes square corner
Bolt	1" throw
Door Handing	Non-handed
ANSI/BHMA	A156.5 Grade 3
ADA	Interior turn piece meets 4.13.9 ADA requirements
UL	Meets UL 3 hour fire rating for all UL functions. ULRef # 10923
ASTM	All Weiser product meets ASTM E 331 water penetration testing



Dimensions	A	B	C	A	B	C
Single Cylinder	2 1/2"	1 1/8"	2 3/16"	3/4"	1/4"	2 1/8"

WARRANTY:

Safelock by Weiser™ products provide a "Lifetime Mechanical & 5 Year-Limited Finish Warranty" that covers all defects in material and workmanship. For more information, please visit ca.weiserlock.com/en/warranty/.