


# SAFELOCK DEADBOLT - SD9100

## Box Pack Specifications



SATIN CHROME

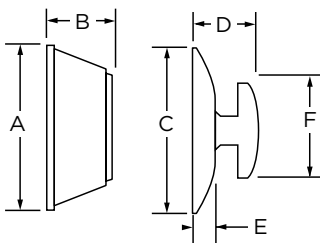


SD	 20 min.	Satin Nickel
Single Cylinder	SD9100	<input type="checkbox"/>
Single Cylinder 3HR UL	SD9102	<input type="checkbox"/>



## SPECIFICATIONS

<b>Door Prep</b>	Single & Double Cylinder: Cross Bore 2-1/8". Edge Bore 1" Latch Face 1" x 2-1/4" One Sided Deadbolt: Half Cross Bore 1-5/8" Edge Bore 1" Latch Face 1" x 2-1/4"
<b>Backset</b>	Adjustable to 2-3/8" or 2-3/4"
<b>Door Thickness</b>	1-3/8"-1-3/4" doors standard. No thick door option
<b>Cylinder</b>	KW 5 pin
<b>Faceplates</b>	1" x 2-1/4" Specify round corner, square corner or drive-in
<b>Strikes</b>	2-1/4" full lip. Specify round corner or square corner
<b>Bolt</b>	1" throw
<b>Door Handing</b>	Non-handed
<b>ANSI/BHMA</b>	A156.5 Grade 3
<b>ADA</b>	Interior turn piece meets 4.13.9 ADA requirements
<b>UL</b>	Meets UL 3 hour fire rating for all UL functions. ULRef # 10923
<b>ASTM</b>	All Weiser product meets ASTM E 331 water penetration testing



Dimensions	A	B	C	A	B	C
Single Cylinder	2 1/2"	1 1/8"	2 3/16"	3/4"	1/4"	2 1/8"

## WARRANTY:

Safelock by Weiser™ products provide a "Lifetime Mechanical & 5 Year-Limited Finish Warranty" that covers all defects in material and workmanship. For more information, please visit [ca.weiserlock.com/en/warranty/](http://ca.weiserlock.com/en/warranty/).