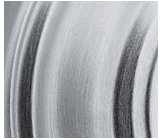


TAVARIS HANDLESET

Box Pack Specifications



SATIN NICKEL



SATIN CHROME



POLISHED CHROME



MATTE BLACK

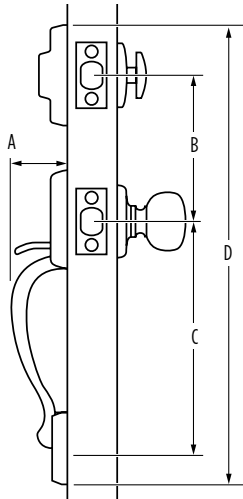


TAVARIS	15 Satin Nickel	26 Polished Chrome	26D Satin Chrome	514 Matte Black
SmartKey Single Cylinder Exterior Pack	<input type="checkbox"/>	<input type="checkbox"/>	<input type="checkbox"/>	<input type="checkbox"/>
KW Single Cylinder Exterior Pack	<input type="checkbox"/>		<input type="checkbox"/>	<input type="checkbox"/>



SPECIFICATIONS

Door Prep	Deadbolt: Cross Bore 2-1/8" or 1-1/2" Edge Bore 1" Latch Face 1" x 2-1/4". Handle: Cross Bore 2-1/8" Edge Bore 1" Latch Face 1" x 2-1/4"
Backset	Deadbolt: Adjustable to 2-3/8" or 2-3/4" Handle: Adjustable to 2-3/8" or 2-3/4"
Door Thickness	1-3/4" doors standard. 2-1/4" doors optional Not designed for use on 1-3/8" doors
Cylinder	SmartKey. KW1 P&T Available
Faceplates	1" x 2-1/4". Includes square corner, radius corner and drive-in
Strikes	Deadbolt: Cross Bore 1-1/8" x 2-3/4" Includes square corner and radius corner Handle: 2-1/4" full lip Includes square corner and radius corner
Bolt	Deadbolt: 1" steel Handle: 1/2" throw. Nickel plated.
Door Handing	Reversible for right or left-handed doors
ANSI/BHMA	A156.5 Grade 2 (for deadbolt)
ADA	N/A
ASTM	All Weiser product meets ASTM E 331 water penetration testing



Dimensions	A	B	C	D
Tavaris	2 17/32"	5 1/2"	9 11/16"	18"

WARRANTY:

Weiser™ products provide a "Lifetime Mechanical Warranty" that covers all defects in material and workmanship. For more information, please visit ca.weiserlock.com/en/warranty/.