

**WEISER**

# UNITE

Experience convenience, connectivity and seamless access control with the Weiser UNITE™ EAC Platform. Electronic locks, cloud-based web and mobile software, and smart credentials work together to deliver a simple yet comprehensive solution for managing your multifamily property.

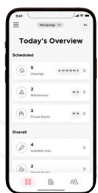
## Weiser UNITE™ Electronic Locks

Weiser UNITE™ electronic locks are the smart multifamily property upgrade for your mechanical locks.

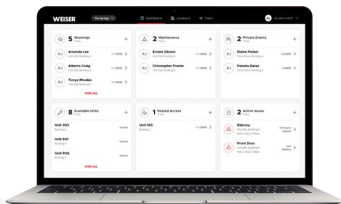
Weiser UNITE™ Electronic Locks provide multifamily property managers and tenants with a convenient, stylish and efficient way to manage resident door access. They come in a standard lock and interconnect variant and can be controlled by mobile, desktop or physical credentials (fob or card). Weiser's trusted electronic locks and intuitive software platform offer a cohesive, simple and seamless access control experience.



### 3 Easy Ways to Engage



Phone App

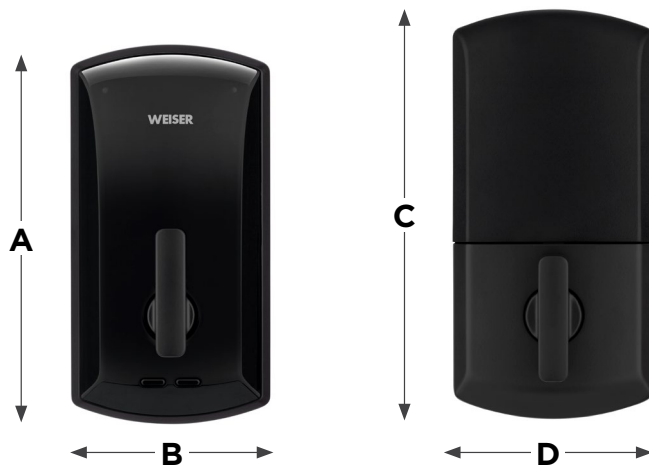


Desktop Portal



Card/FOB

## Deadbolt Model #: 1000



### Dimensions

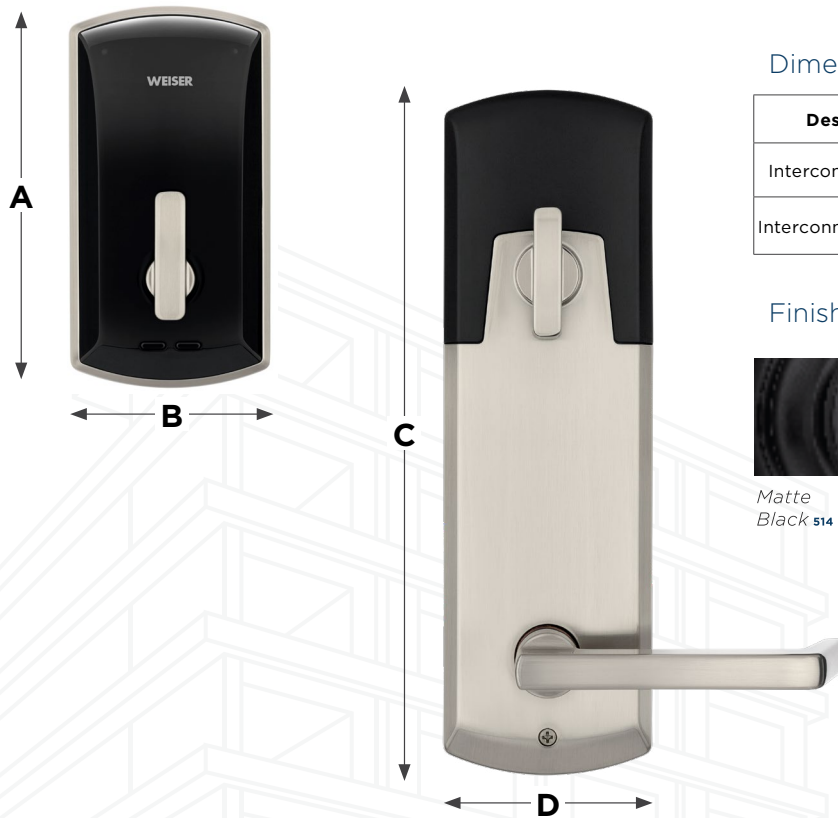
Design	A	B	C	D
Deadbolt	5 11/32"	2 27/32"	5 21/32"	2 27/32"

### Finishes



Matte Black 514 Polished Chrome 26 Satin Chrome 26D Satin Nickel 15

## Interconnect Model #: 1100



### Dimensions

Design	A	B	C	D
Interconnect 4"	5 11/32"	2 27/32"	8 1/4"	3"
Interconnect 5 1/2"	5 11/32"	2 27/32"	9 3/4"	3"

### Finishes



Matte Black 514 Polished Chrome 26 Satin Chrome 26D Satin Nickel 15

### Interconnect Lever Options



Halifax



Hali RTD



Kingston RTD



Milan



Delta



Breton

### Interconnect Rose Options



Square Rose



Round Rose

### Finishes



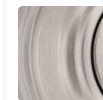
Matte Black 514



Polished Chrome 26



Satin Chrome 26D



Satin Nickel 15

# Specifications

Mechanical Specifications	
Deadbolt & Interconnect	
<b>Materials</b>	All-metal chassis and escutcheon
<b>Door thickness</b>	1 3/8" to 1 3/4" (thick kits available up to 2 1/4" for DB, up to 2" for IC)
<b>Backsets</b>	Deadbolts and latches (IC) adjustable to fit 2 3/8" or 2 3/4" backsets
<b>Latch Plates</b>	1" x 2 1/4" square & round corner (round standard, square in box)
<b>Deadbolt</b>	Manual Throw Deadbolt 1" (25 mm) tapered throw
<b>Deadbolt Strike Package</b>	Round & Square corner, 1 1/8" x 2 3/4" Round & Square corner, Full lip, 1 3/4" x 2 1/4" (lip length: 17/64") Additional options available
<b>Bore</b>	2 1/8"
<b>Stile Width</b>	Minimum 4 1/2" stile for 2 3/8" backset, minimum 5" stile for 2 3/4" backset
<b>Battery Cover</b>	Snap-to-Secure cover. No tools required.
<b>Thumb-turn</b>	Spring-loaded return to vertical
Interconnect Only	
<b>Interconnect Size</b>	5.5" and 4.0" CTC (center to center)
<b>Lever Strike Package (IC Only)</b>	Square corner, T-strike, box, 1 1/8" x 2 3/4". Full Lip Square Corner, 1 3/4" x 2 1/4". Full Lip 1/4". Round Corner, 1 3/4" x 2 1/4". Additional options available
<b>Handing</b>	Field reversible (1100 IC)
Electronic Specifications	
<b>Users Capacity</b>	Up to 500 users per lock (additional users with software)
<b>Audits Capacity</b>	Up to 1000 events
<b>Visual and Audible Communications</b>	Exterior LED (red, amber, green) and Audible indicators
<b>Wake-up</b>	Responds to host command in <5 seconds
<b>Communication</b>	BLE Bluetooth   RFID (built-in reader)
<b>Connectivity options</b>	Mobile (send updates at the lock) No-Tour with enroll reader & smart credential Off-line No touring: Mobile/app shares updates w/ lock
<b>Available status signals</b>	Battery status
<b>Power</b>	4 AA Batteries   Easy access 9v Back-up ports   Battery Life: 18 months
<b>OTA Firmware Upgrades</b>	Available
<b>Memory</b>	Non-volatile memory: Retains data w/battery removed
<b>Diagnostics</b>	Diagnostics with software
<b>Operating humidity</b>	0 - 100% non-condensing
<b>Waterproof</b>	Exterior
<b>Operating Temperature</b>	Exterior: -35°C to 85°C (-31°F to 185°F)   Interior: 0°C to 54°C (32°F to 130°F)
Certifications	
	1000 DB: ANSI/BHMA A156.36 Grade 2
	1100 IC: ANSI/BHMA A156.12 Grade 2
	ANSI/BHMA A156.5
	Industry Canada RSS-247
	ADA compliant - ANSI A117.1
	UL 90 minute, Canada UL 20-minute wood door rated
	Florida Building Code HVHZ
	FCC Certification 15C & CE: RE 2014/53/EU
	AES-256 Bit encryption
Warranty	
	Mechanical and Finish: Limited Lifetime
	Electronics: 2-year limited electronics

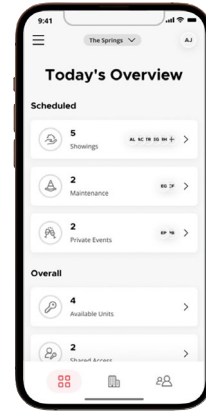
## Credentials



EV3 & Prox Access Card  
4000



EV3 & Prox Fob  
4130

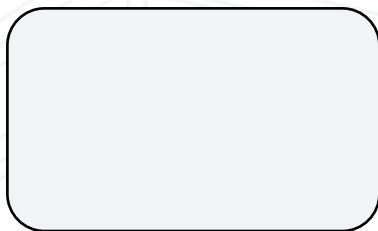


Bluetooth Phone  
is also a Credential

## Specifications

Technical Specifications		
	FOB	Cards
<b>RF Technologies</b>	Dual Frequency MIFARE DESFire EV3 & 125KHz Prox	
<b>Security Level</b>	EAL 5+	
<b>LEAF Compatibility</b>	Fully Compatible	
<b>Memory Size</b>	8 Kbyte	
<b>Read Range (Reader dependent)</b>	up to 1"	up to 3"
<b>Temperature Range</b>	-31° to 158° F -35° to 70° C	
<b>Dimensions</b>	1 19/32" x 1 1/4" x 3/16"	3 3/8" x 2 1/8" x 1/32"
<b>Material</b>	ABS	PVC + PET
<b>Color</b>	Black ring white center	White/Red
<b>Attachment</b>	Integral clip/ring space	NA
<b>Warranty</b>	5 Year	

## Construction Mode Credentials



Construction User EV3 Card  
4242



Construction Master EV3 Card  
4233